

INTRODUCTION TO GEOLIME

Simple GIS - Geographic Information System - with Python

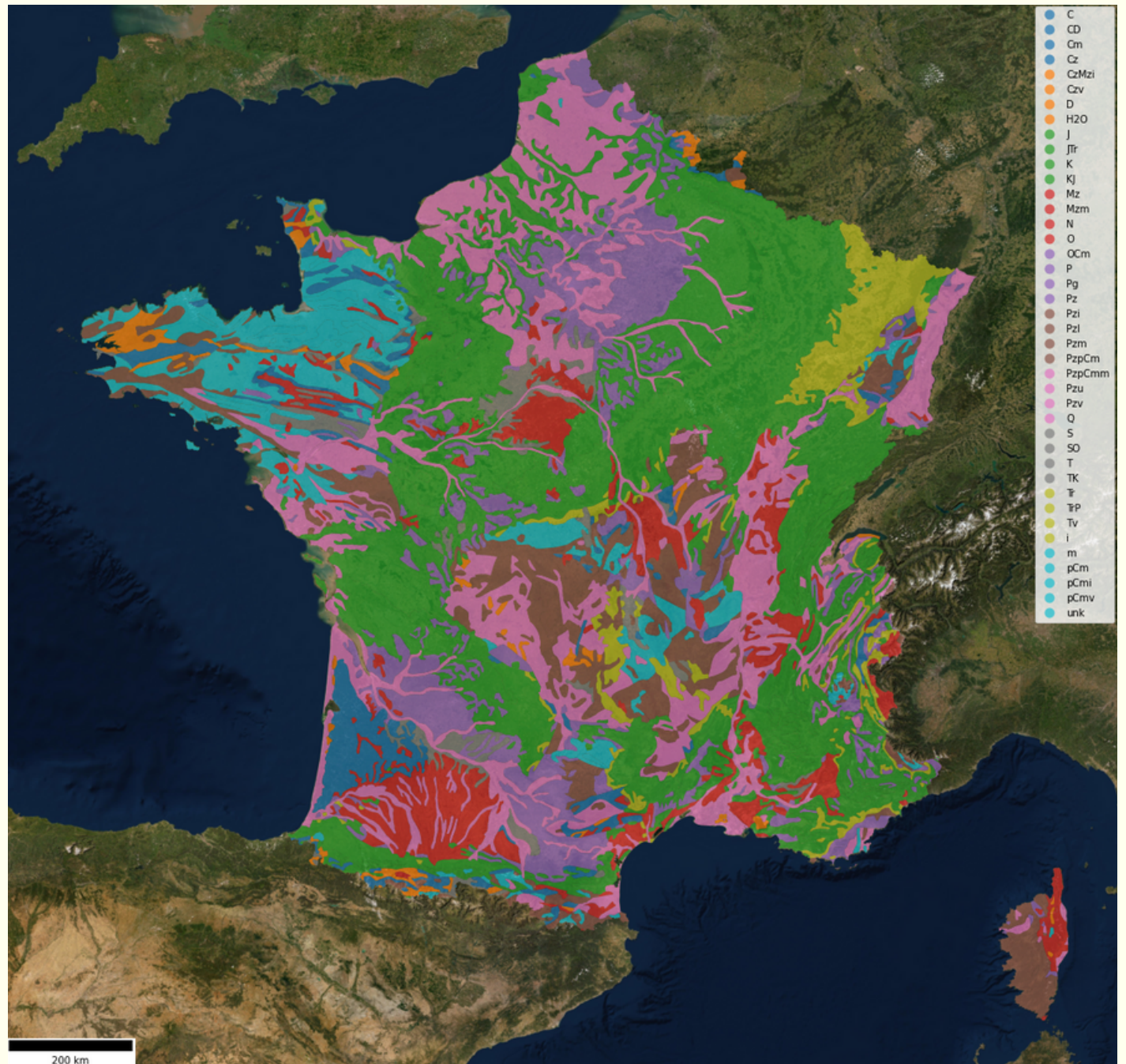
DEEPLIME





```
geol_france = geo.create_gis_object_from_file(  
    name = 'FranceGeol',  
    file_path = 'geologie_france.shp'  
)
```

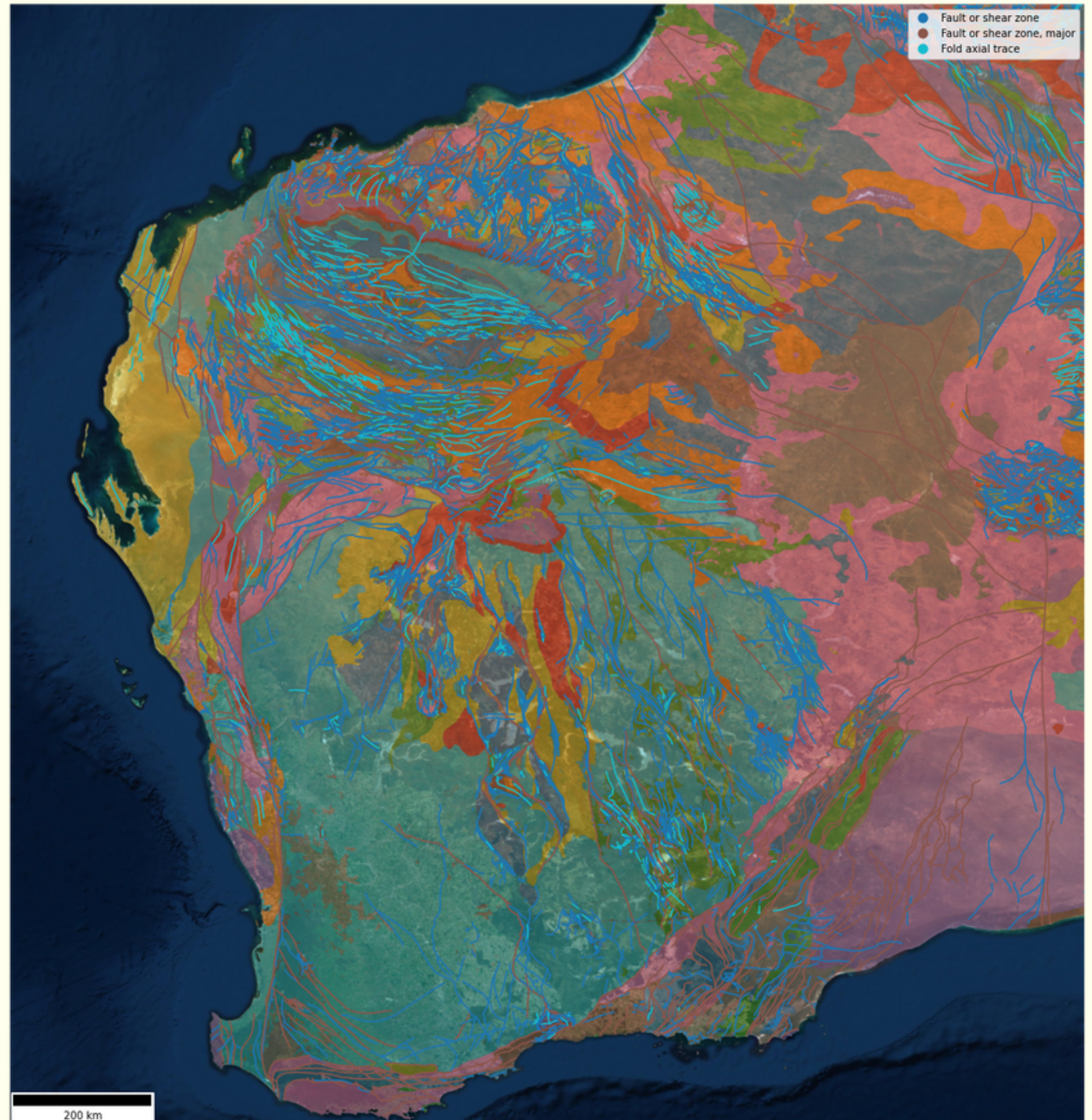
```
geol_france.plot(  
    column="Lithologie",  
    alpha=0.6,  
    legend=True,  
)
```





```
geol_wa = geo.create_gis_object_from_file(  
    name = 'WesternAustraliaGeol',  
    file_path = 'geology_wa.shp'  
)
```

```
geol_wa.plot(  
    column=["Lithology", "Faults"],  
    alpha=0.6,  
    legend=True,  
)
```





```
geol_nc = geo.create_gis_object_from_file(  
    name = 'NouvelleCaledonieGeol',  
    file_path = 'geologie_nc.shp'  
)
```

```
geol_nc.plot(  
    column="Lithologie",  
    alpha=0.6,  
    legend=True,  
)
```



HOW EASY WAS THAT?

Check our
documentation
for more examples
and let's rock!

DEEPLIME

