

INTRODUCTION TO GEOLIME



Drillholes & Block Model Visualization on Map

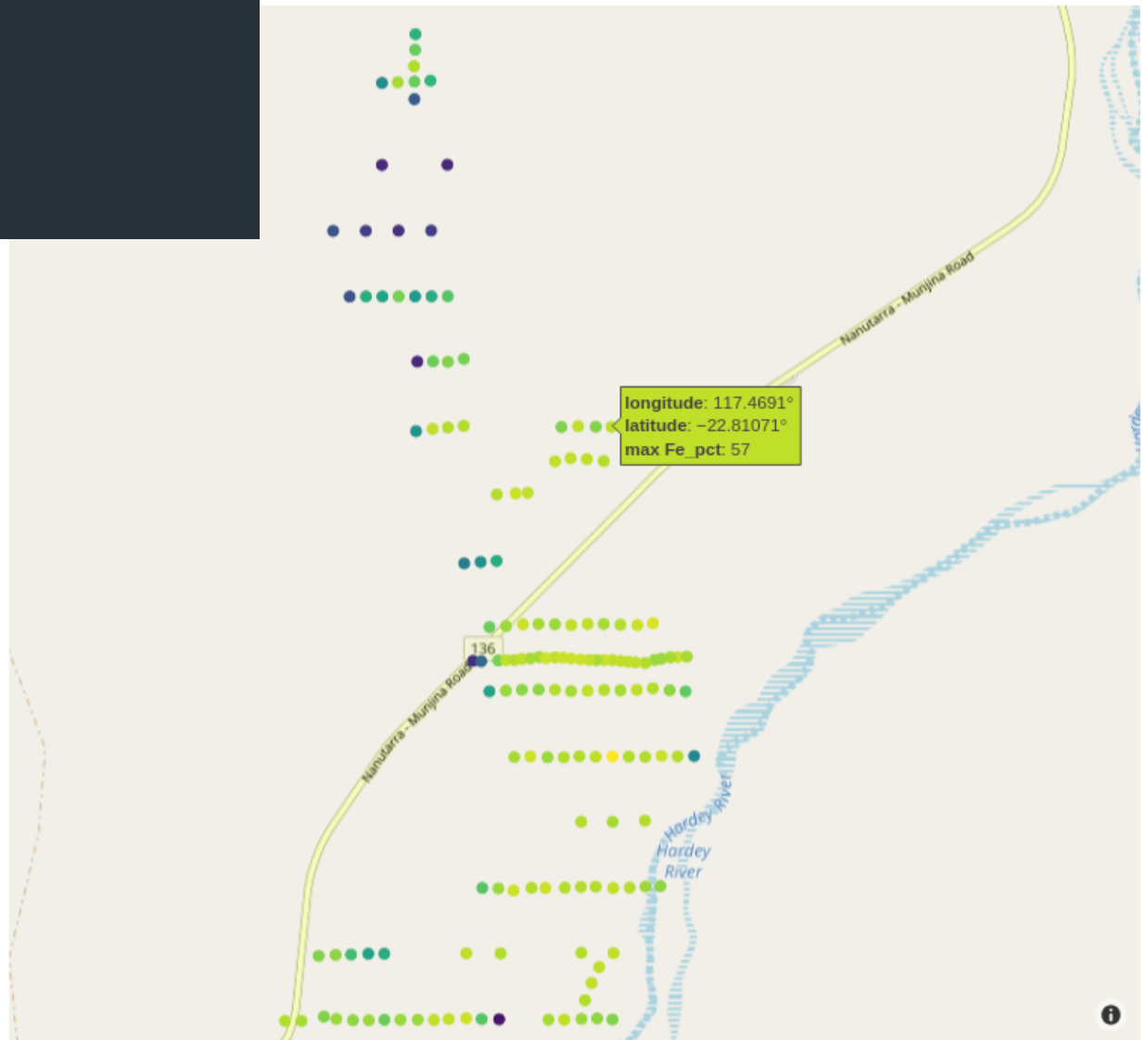
DEEPLIME



```
import geolime as geo

drillholes = geo.create_drillholes(
    name='Rocklea',
    collar,
    hs_assay,
    survey
)

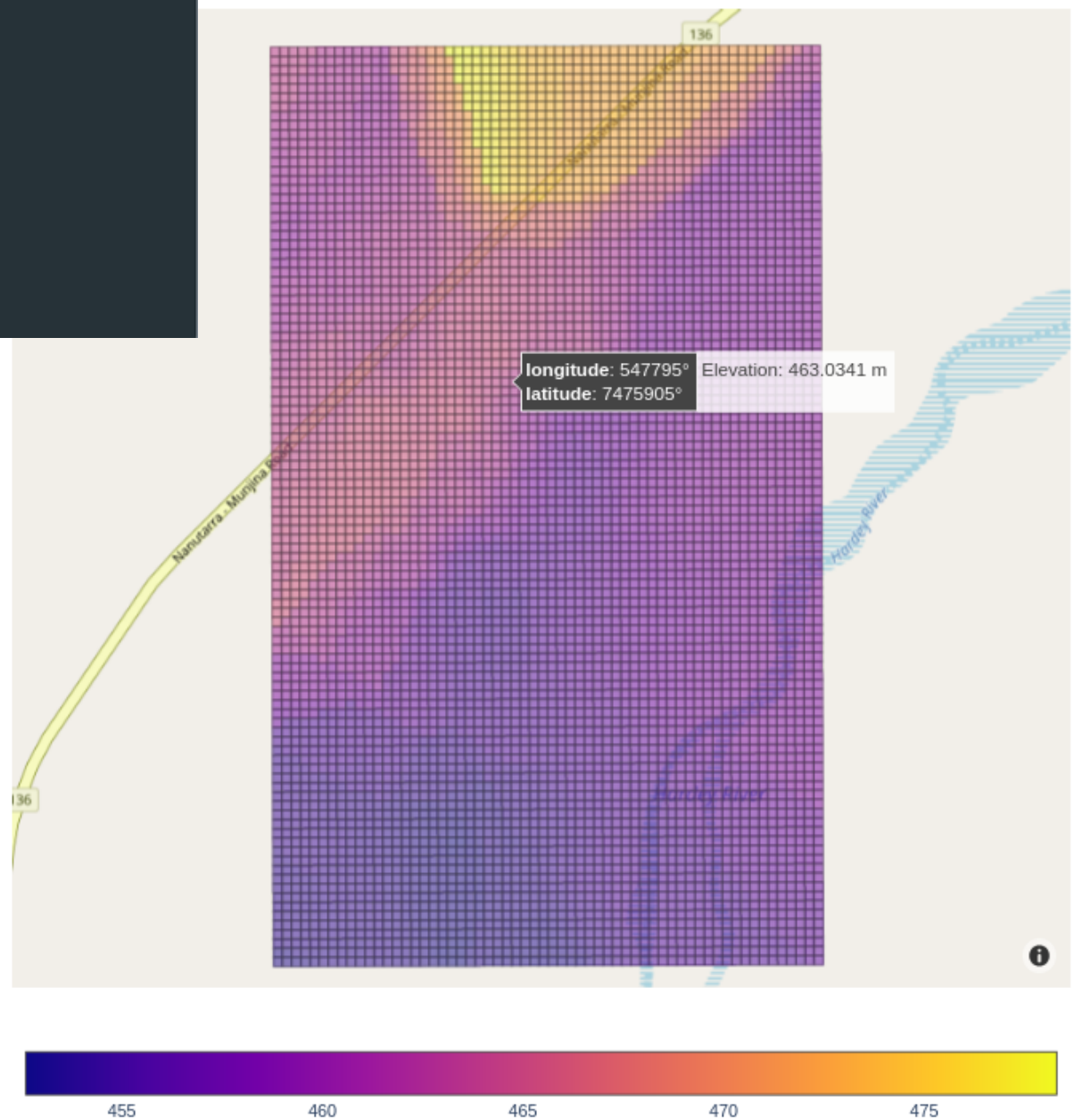
drillholes.to_map(
    attribute='Fe_pct',
    agg_method='max'
)
```



```
import geolime as geo

grid = geo.Voxel(
    name='Rocklea',
    shape=[60, 100, 10],
    origin=[547000, 7474000, 390],
    axis=[
        [30., 0., 0.],
        [0., 30., 0.],
        [0., 0., 10.]
    ]
)

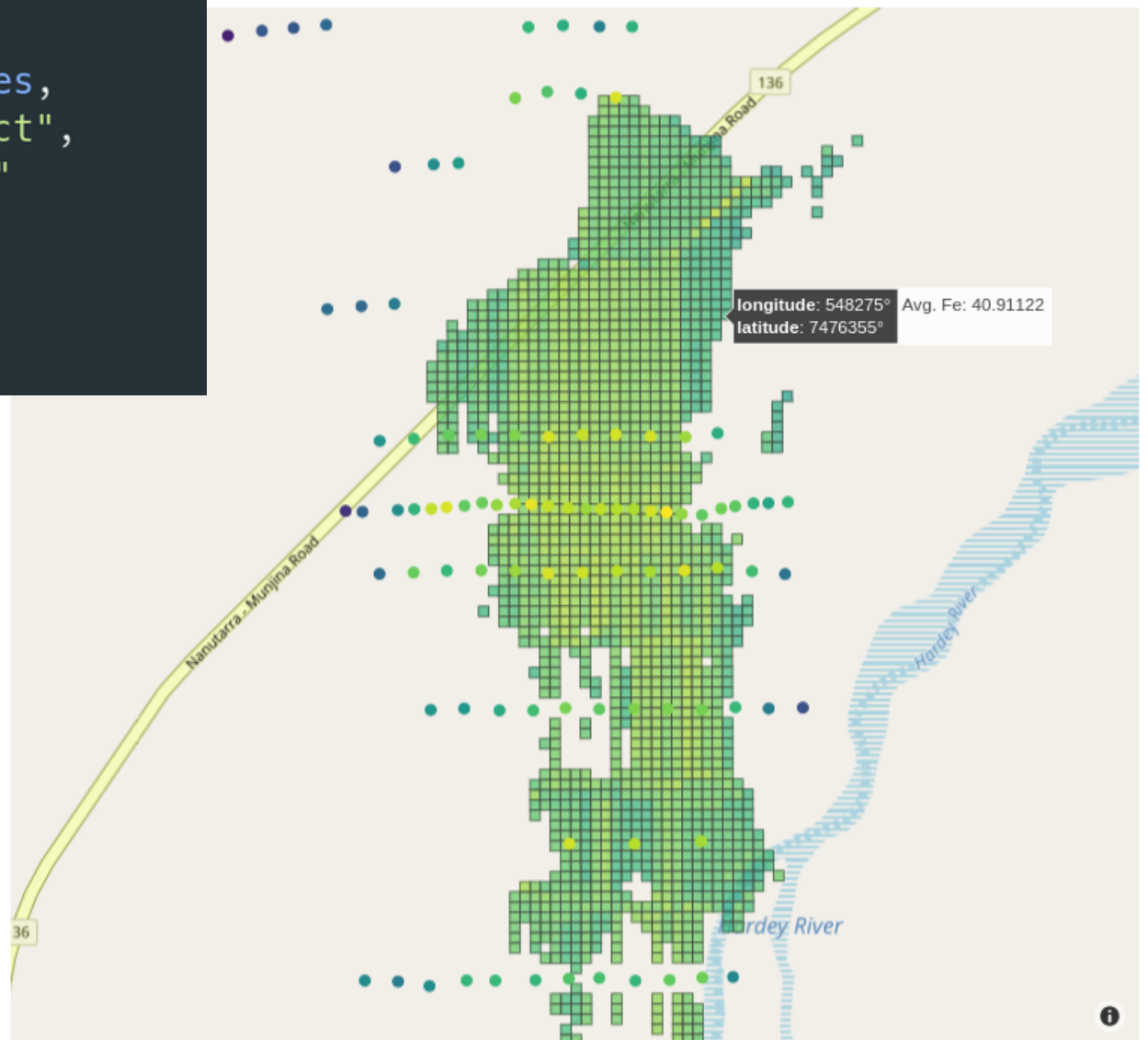
grid.to_map(
    attribute='Z',
    agg_method='max'
)
```





```
import geolime as geo
```

```
geo.to_map(  
  [  
    {  
      "object": grid,  
      "attribute": "Fe_pct",  
      "agg_method": "mean",  
      "region": "HighGrade"  
    },  
    {  
      "object": drillholes,  
      "attribute": "Fe_pct",  
      "agg_method": "mean"  
    }  
  ]  
)
```



HOW EASY WAS THAT?

Check our
documentation for
more examples,
and let's rock!



DEEPLIME